

Overhead Stirrers

MSE-1/2/3, MSM-1/2/3 (max. 1400 rpm)

Overhead Stirrers (economy & analog)

Dynamic stirring, simple operation, and sustainable economic benefits



Economy Models (MSE)



Analog Models (MSM)



Model		MSE-1	MSE-2	MSE-3	MSM-1	MSM-2	MSM-3
Technical Data	Speed Control	Scale					
	Speed Range (rpm)	Up to 1,400	Up to 1,200	Up to 900	50 ~ 1,400	50 ~ 1,200	50 ~ 900
	Display	None			Digital		
	Stirring Capacity (L, H ₂ O)	20	30	50	20	30	50
	Torque, Max. (N·cm)	15	27	53	15	27	53
Power Max. (W / A)	15 / 1.2	20.4 / 1.7	31.2 / 2.6	15 / 1.2	20.4 / 1.7	31.2 / 2.6	
General Data	Body Material	Aluminum, PP					
	Dimension (mm / inch, WxDxH)	65x135x190 / 2.56x5.31x7.48	70x150x200 / 2.76x5.91x7.87	70x150x215 / 2.76x5.91x8.46	65x135x190 / 2.56x5.31x7.48	70x150x200 / 2.76x5.91x7.87	70x150x215 / 2.76x5.91x8.46
	Net Weight (Kg / lbs)	2 / 4.41	2.5 / 5.51	3 / 6.61	2 / 4.41	2.5 / 5.51	3 / 6.61
	Electrical Requirements	AC 100 ~ 240V, 50/60Hz					
	Safety Device	Thermal protection, Current protection, Emergency stop (MSM)					
	Shaft Dia, Max (mm / Inch)	3 ~ 10 / 0.12 ~ 0.39					
Cat. No.	Protection Class (DIN EN 60529)	IP10					
	KR plug	AAH372115K	AAH372215K	AAH372315K	AAH370115K	AAH370215K	AAH370315K
	US plug	AAH372115U	AAH372215U	AAH372315U	AAH370115U	AAH370215U	AAH370315U

※ Permissible environmental conditions: temperature (5-40 °C) and relative humidity (up to 80%).

※ Protection class according to DIN EN 60529: waterproof, Dust production index based on the test level.

※ Above specifications can be changed without prior notice.



Common Features

Compact and slim head design

Powerful torque capable of handling high viscosity tasks

Safety features against overload and overheating

Sequential auto-stop safety features for MSM models

• Visible warning → Audible warning → Auto-stop

High speed, vibration-free, and silent operation

Speed adjustment dial knob

A wide range of accessories available

Additional Features of MSM

Well illuminated digital display panel with sensitive touch buttons

Convenient emergency stop feature

Displayed modes

• RPM, power ratio (%)

Accessories

For detailed information of accessories, please refer to the page 13-15.

Overhead Stirrers

MSP-1/2/3 (max. 1400 rpm)

Overhead Stirrers (digital)

Specially designed for optimum usability and the highest efficiency in the same class with advanced safety features

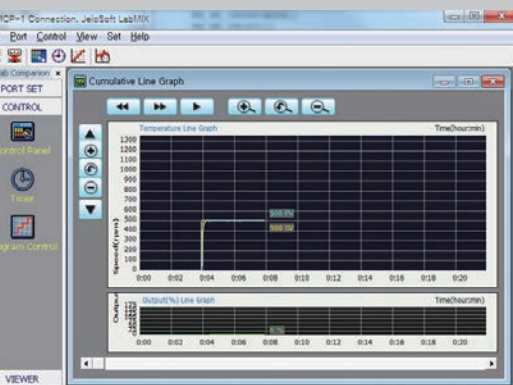


Digital Models (MSP)



Model	MSP-1	MSP-2	MSP-3	
Technical Data	Speed Control	PID feedback control		
	Speed Range (rpm)	50 to 1,400	50 to 1,200	50 to 900
	Display	Digital		
	Stirring Capacity, Max. (L, H:O)	20	30	50
	Torque, Max. (N-cm)	15	27	53
	Power Max. (W / A)	15 / 1.2	20.4 / 1.7	31.2 / 2.6
General Data	Body Material	Aluminum, PP		
	Dimension (mm / inch, WxDxH)	65x135x190 / 2.56x5.31x7.48	70x150x200 / 2.76x5.91x7.87	70x150x215 / 2.76x5.91x8.46
	Net Weight (Kg / lbs)	2 / 4.41	2.5 / 5.51	3 / 6.61
	Electrical Requirements	AC 100 ~ 240V, 50 / 60Hz		
	Safety Device	Thermal protection, Current protection, Emergency stop, Automatic speed-down (MSP)		
	Shaft Dia, Max (mm / Inch)	3 ~ 10 / 0.12 ~ 0.39		
Cat. No.	Protection Class (DIN EN 60529)	IP10		
	KR plug	AAH371115K	AAH371215K	AAH371315K
	US plug	AAH371115U	AAH371215U	AAH371315U

- * Permissible environmental conditions: temperature (5-40°C) and relative humidity (up to 80%).
- * Protection class according to DIN EN 60529: waterproof, Dust production index based on the test level.
- * Above specifications can be changed without prior notice.



Compact and slim head design

Prevention of accidental spills or splashes thanks to microprocessor controlled smooth start and stop functions

Maintenance of constant motor speed by PID feedback control system even under conditions of changing viscosity

Powerful torque capable of handling high viscosity tasks

High speed, vibration-free, and silent operation

Speed adjustment dial knob

Built-in USB port for external control and data collection (Lab Companion software required)

Wide range of accessories available

Bright digital display panel with touch sensitive buttons

Selectable display modes
• RPM, power ratio (%), motor temp, and run time

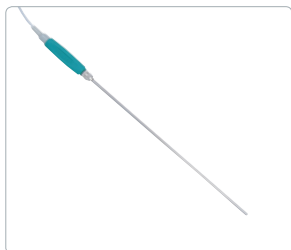
Convenient emergency stop feature

Safety features against overload and overheating
• Visible warning → Audible warning → Auto-stop

Accessories

For detailed information of accessories, please refer to the page 13-15.

for Hotplates & Stirrers & Magnetic Stirrers



Temperature Probe



Heating Bath



Transparent Safety Shield



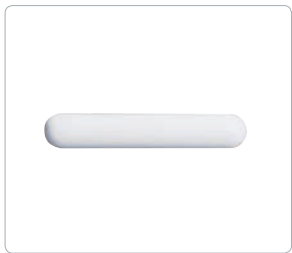
Clamp Holders (C-10, C-7, C-5)

Cat. No.	Description	Suitable for
AAA34501	Temperature Probe (PT 100, Max. 250°C, SN-8-4 connector sensor)	TS series
AAA34502	Temperature Probe (PT 100, Max. 350°C, SN-8-4 connector sensor)	
HPS0012	Heating Bath	T / TS / TM-14 series
HPS0015	Heating Bath	T / TS / TM-17 series
HPS0059	Transparent Safety Shield (PC)	T / TS / TM-14 series
HPS0039	Transparent Safety Shield (PC)	T / TS / TM-17 series
MTT0132	Support Rod, M10 (Ø12mm x 400mm / Ø0.47" x 15.74")	
AAA37512	Clamp Holder, C-10 (Al body, Ø17mm / Ø0.66")	T / TS / TM series
AAA37513	Clamp Holder, C-7 (Al body, Ø12mm / Ø0.47")	
AAA37514	Clamp Holder, C-5 (PP body, Ø12mm / Ø0.47")	
MTT0144	Plate cover (White color, Silicone Ø115mm)	MS-12T
MTT0146	Plate cover (White color, Silicone Ø165mm)	MS-17T
MTT0002	Plate cover (White color, Silicone Ø120)	MS-12B
MTT0003	Plate cover (White color, Silicone Ø170)	MS-17B/G
MTT0004	Plate cover (White color, Silicone Ø220)	MS-22B/G
MTT0143	Plate cover (Black color, Silicone Ø115mm)	MS-12T
MTT0145	Plate cover (Black color, Silicone Ø165mm)	MS-17T
MTT0005	Plate cover (Black color, Silicone Ø120)	MS-12B
MTT0006	Plate cover (Black color, Silicone Ø170)	MS-17B/G
MTT0007	Plate cover (Black color, Silicone Ø220)	MS-22B/G
MTS0015	Silicone pad (355x475x1mm)	MS-53M
MTS0016	Silicone pad (235x475x1mm)	MS-52M
MTS0017	Silicone pad (115x475x1mm)	MS-51M
MTS0041	Silicone pad (235x310x1mm)	MS-32M
MTS0042	Silicone pad (355x310x1mm)	MS-23M/33M
MTT0001	Power Adapter (100~240V, 50/60Hz)	
AAA33501	Power Divider(5 channels*) with M10 rod, adapter(100~240V, 50/60Hz), five DC plugs	MS-12B/T, MS-17B/T
MTT0132	Support Rod (Ø12x400, M10)	MS-17G/ 22G

* Power supply to Max. five units at the same time.



Octahedral magnetic stirring bars



Cylindrical magnetic stirring bars



Oval magnetic stirring bars



Plastic Retrievers (PP / PTFE)

Cat. No.	Length	Diameter
BCW1513	13mm(0.51")	8mm(0.31")
BCW1515	15mm(0.59")	8mm(0.31")
BCW1522	22mm(0.86")	8mm(0.31")
BCW1525	25mm(0.98")	8mm(0.31")
BCW1528	28mm(1.10")	8mm(0.31")
BCW1538	38mm(1.49")	8mm(0.31")
BCW1541	41mm(1.61")	8mm(0.31")
BCW1551	51mm(2.00")	8mm(0.31")
BCW155110	51mm(2.00")	10mm(0.39")

Cat. No.	Length	Diameter
BCW11138	13mm(0.51")	8mm(0.31")
BCW11156	15mm(0.59")	6mm(0.23")
BCW11208	20mm(0.78")	8mm(0.31")
BCW11258	25mm(0.98")	8mm(0.31")
BCW11308	30mm(1.18")	8mm(0.31")
BCW1140	40mm(1.57")	8mm(0.31")
BCW1150	50mm(1.96")	8mm(0.31")
-	-	-
-	-	-

Cat. No.	Length	Diameter
BCW1610	10mm(0.39")	5mm(0.19")
BCW1615	15mm(0.59")	6mm(0.23")
BCW1620	20mm(0.78")	10mm(0.39")
BCW162510	25mm(0.98")	10mm(0.39")
BCW1630	30mm(1.18")	16mm(0.62")
BCW1635	35mm(1.37")	16mm(0.62")
BCW1640	40mm(1.57")	20mm(0.78")
BCW1650	50mm(1.96")	20mm(0.78")
-	-	-

Cat. No.	Length	Diameter
Polypropylene, Alnico V		
BCW41300	300mm(11.81")	10mm(0.39")
BCW41350	350mm(13.77")	10mm(0.39")
BCW41450	450mm(17.71")	10mm(0.39")
PTFE, Alnico V		
BCW4150	150mm(5.90")	10mm(0.39")
BCW4250	250mm(9.84")	10mm(0.39")
BCW4350	350mm(13.77")	10mm(0.39")
BCW4450	450mm(17.71")	10mm(0.39")